



OMANOMAN

Man-O-Man x RR Shottle Elisa VG-87 (Shottle)

x EX-90 BW Marshall x VG-89 Aaron x EX-90 Elton x EX-90 Grant x EX-90 Winken ...



RR Shottle Elisa VG-87 (Dam)

OMANOMAN-ET TV TL
born 20. 1. 2010

SUPERATTRACTIVE GENOMIC SIRE !!!

- ▶ **TOP 5 IN GENOMIC BULLS IN CANADA (gLPI 3168) !!!**
- ▶ **AT THE TOP 1 IN GENOMIC BULLS IN GERMANY (gRZG 148) !!!**
- ▶ **FROM THIS FAMILY COMES ALSO EXCELLENT SNOWMAN - TOP 1 IN CZE (SIH 148), TOP 1 IN DEU (RZG 152), TOP 3 IN NLD (NVI 252) !!!**
- ▶ **EASY CALVINGS**

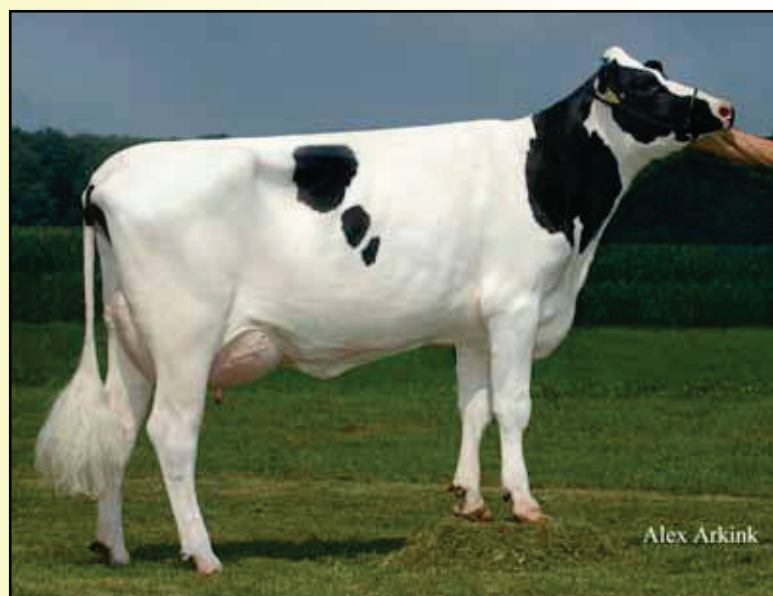
▶ *Omanoman is a grandson of one of the most popular brood cow her age: Broeks MBM Elsa EX-90, "GLOBAL COW OF THE YEAR 2010" in Holstein International (November 2010)!*

GTPI: 2199		NM: 605	
Milk	2142 lbs.	PTAT	+2,08
Protein	73 lbs	Udder Comp.	+1,34
	+0,03 %	F&L Comp.	+2,12
Fat	106 lbs	Som.Cell Sc.	+2,98
	+0,11 %	Prod Life	+0,5
		CE	7%
<i>Milk prod 78% Rel.</i>		<i>Type 74% Rel.</i>	

USA G 08/2011

Sire: MAN-O-MAN
Dam: RR Shottle Elisa VG-87 (SHOTTLE)
MGD: Broeks MBM Elsa EX-90 (SNOWMAN's Dam) (BW MARSHALL)
2' MGD: Ever-Green-View Elsa VG-89 (AARON)
3' MGD: Ever-Green-View Elsie EX-92 (ELTON)
4' MGD: Ever-Green-View Le Grant EX-90 (GRANT)
5' MGD: Ever-Green-View Leisure EX-91 (WINKEN)

LINEAR TRAITS			-1	0	1	
Stature	2,87	Short				Tall
Strength	1,05	Frail				Strong
Body Depth	1,59	Shallow				Deep
Dairy Form	2,79	Tight Rib				Open Rib
Rump Angle	-0,65	High				Sloped
Thurl Width	2,02	Narrow				Wide
R Legs Side	0,01	Posty				Sickle
R Legs Rear	1,65	Hock-in				Straight
Foot Angle	3,10	Low				Steep
F & L Score	2,12	Low				High
F U Attach	0,36	Loose				Strong
R U Height	2,76	Low				High
R U Width	2,51	Narrow				Wide
Udder Cleft	3,85	Weak				Strong
Udder Depth	0,63	Deep				Shallow
F Teat Place	1,53	Wide				Close
R Teat Place	2,54	Wide				Close
Teat Length	1,31	Short				Long



Broeks MBM Elsa EX-90 (MGD)